



\*image for illustration only, final product may differ from the artist impression shown above

BEDROOMS

3



GARAGE

2



BATHROOMS

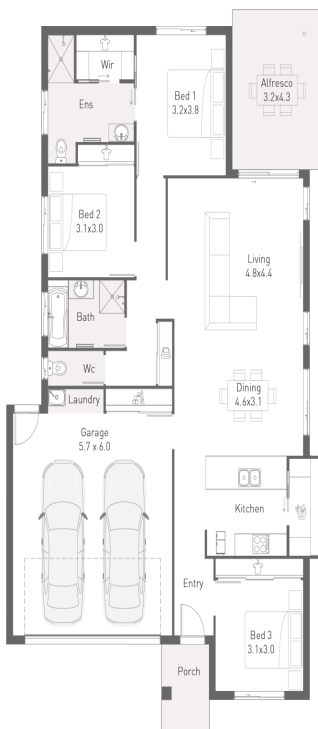
2



**\$731,600**

**HOUSE & LAND PACKAGE**

**32 New Road , Burpengary , QLD, 4505**



- > Colorbond Roof
- > Flickmixer Taps
- > TV antenna
- > Stainless steel appliances
- > Driveway
- > Fencing
- > Clothesline
- > Floor Coverings
- > Full Render
- > 20mm Stone Benchtops
- > Alfresco Under Roof
- > Light Fittings
- > Dishwasher
- > Window coverings
- > Concrete Alfresco & Porch
- > Letterbox
- > Fly Screens To Windows
- > Free facade upgrade
- > 2550 Ceilings throughout

Display Homes Open  
7 Days 10am - 4pm

For Display Locations Visit  
[www.integralehomes.com.au](http://www.integralehomes.com.au)

Cassandra Jack  
0413 657 105  
[cassandra@integralehomes.com.au](mailto:cassandra@integralehomes.com.au)

\*Dimensions and sizes are indicative only. Photos & Images are for illustration purpose only and may show items that are not included or supplied by Integrale Homes. Please contact an Integrale Homes Consultant for full list of inclusions.